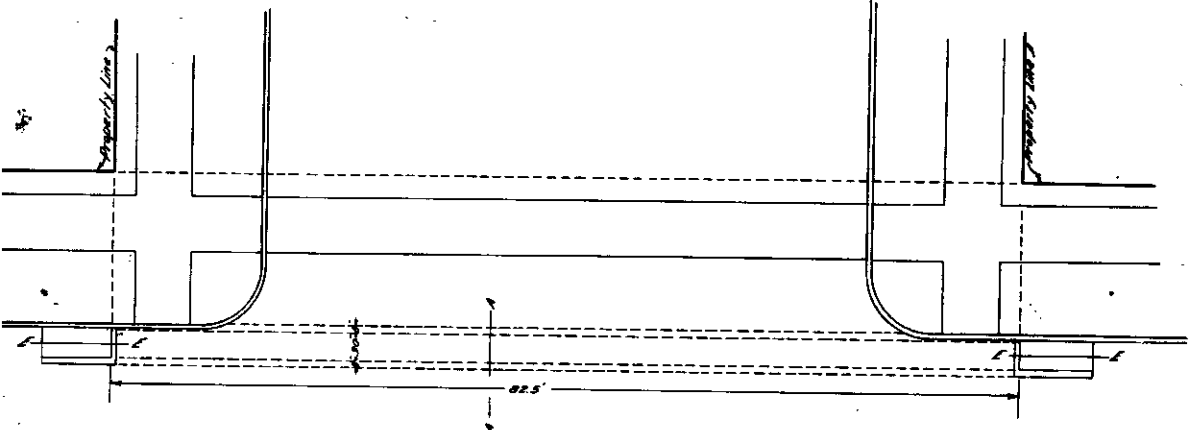
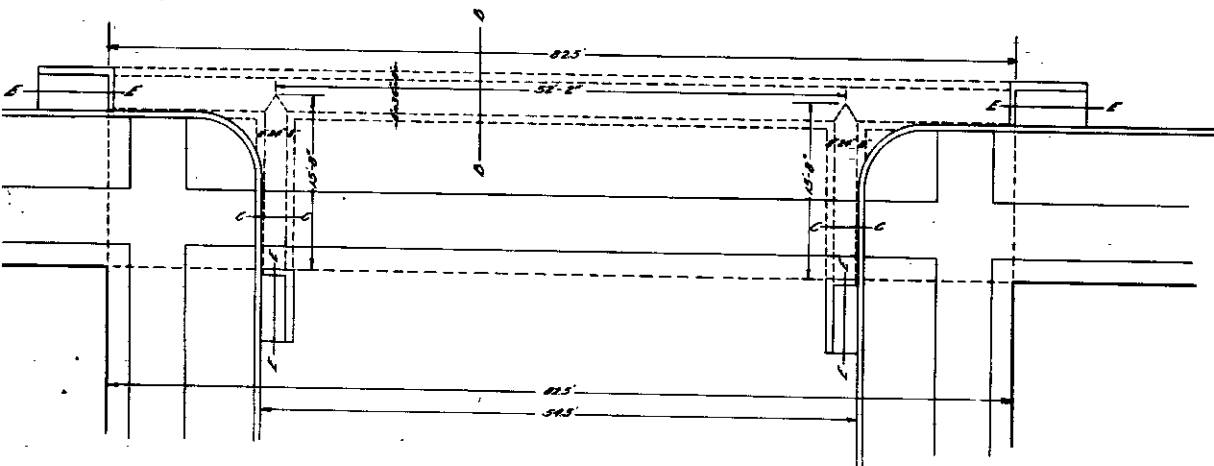


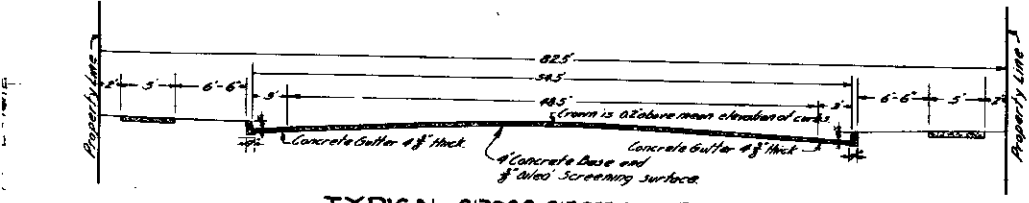
PLAN
Scale 1"=50'



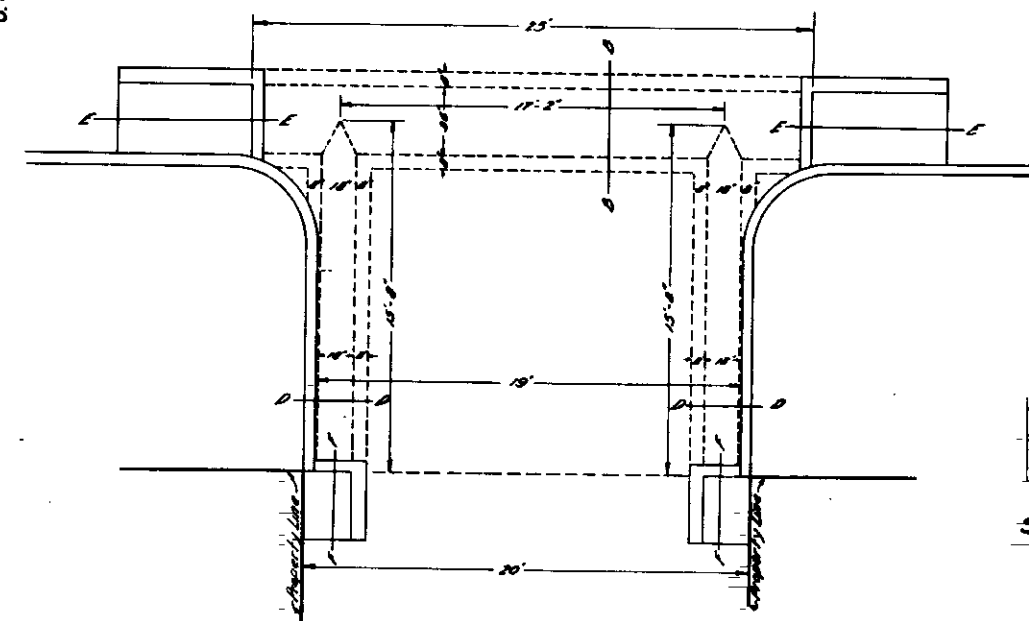
PLAN OF CULVERT NO. 4
Scale 1"=1'



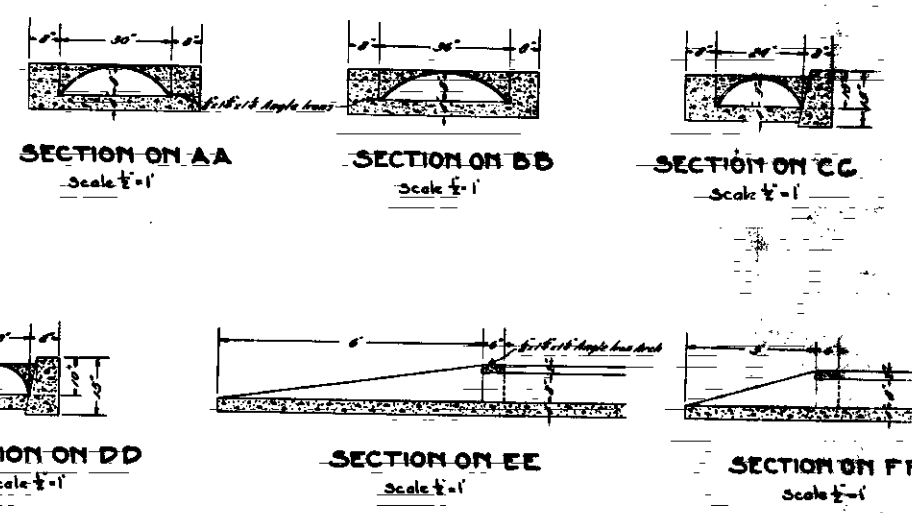
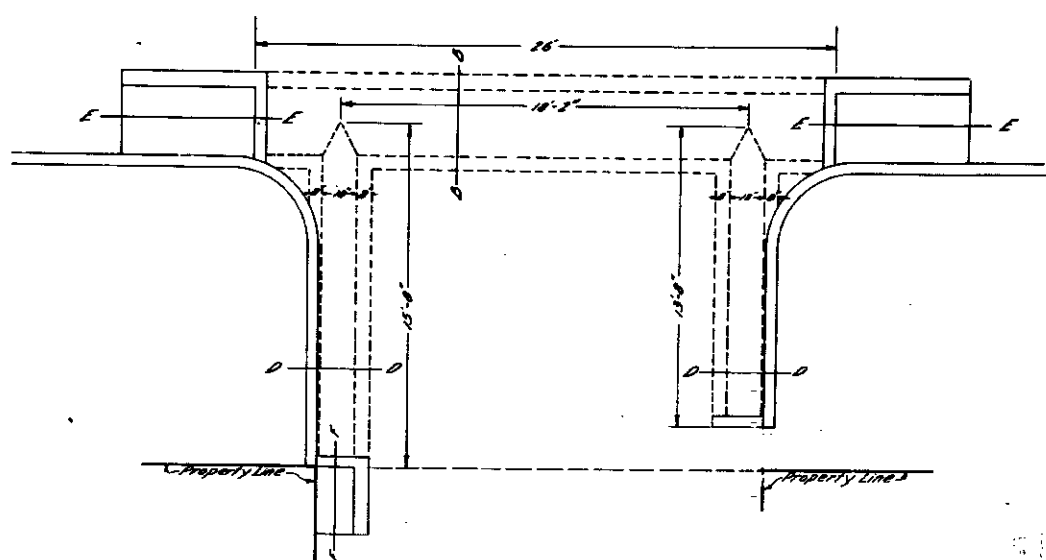
PLAN OF CULVERT NO. 3 WITH STUB CULVERTS
Scale 1"=1'



TYPICAL CROSS SECTION OF SIDEWALK



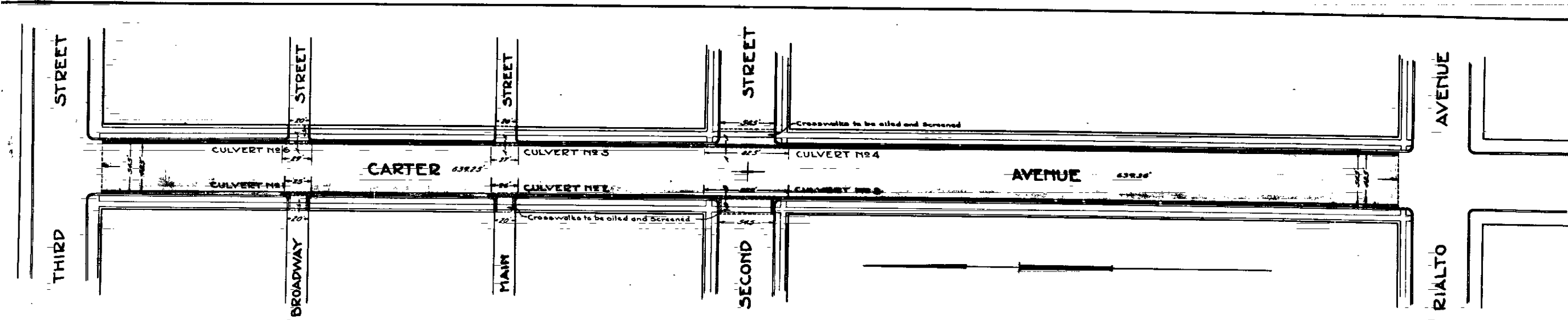
PLAN OF CULVERT NO. 1 WITH STUB CULVERTS
Scale 1"=1'



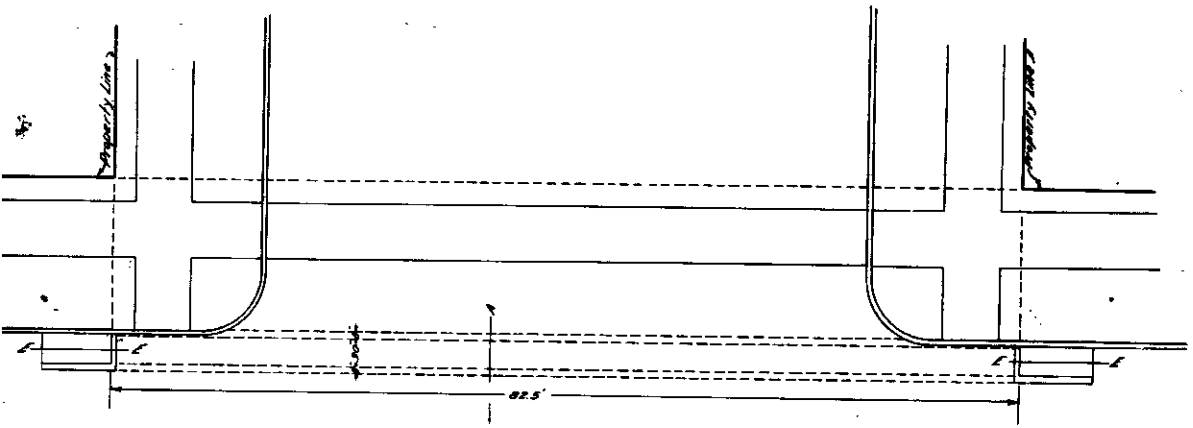
1" means foot or feet
 1/2" means inch or inches
 1/4" means quarter
 1/8" means eighth
 All culverts to be number 10 gauge iron
 United States standard
 All ends of culverts to be protected
 by 1/2" x 1/2" x 8" angle iron angles.

Concrete in section shown thus
 Pavement to be constructed shown thus
 Gutter to be constructed shown thus
 Culverts to be constructed shown thus

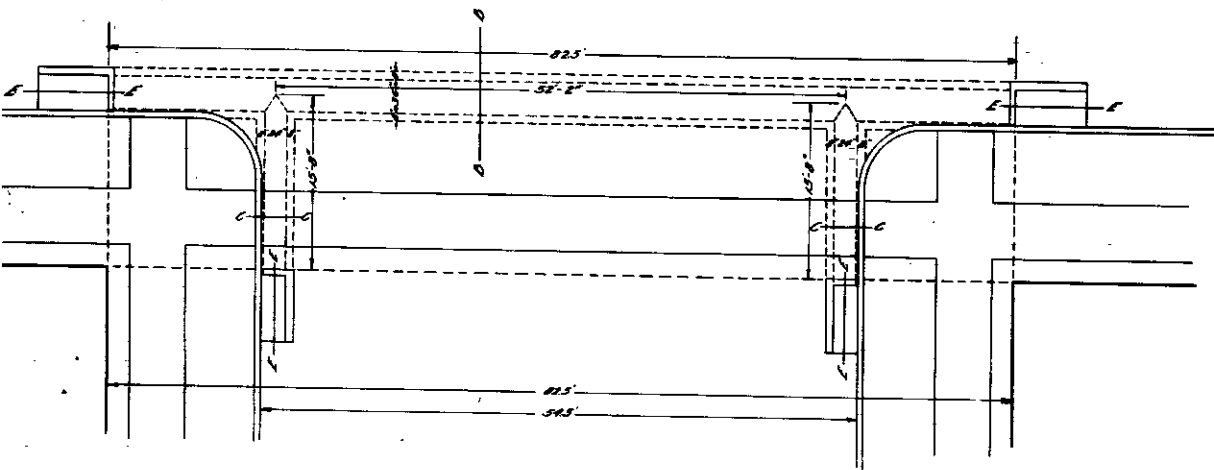
18249
PLANS
 FOR THE
IMPROVEMENT
 OF
CARTER AVENUE
 FROM
RIALTO AVENUE TO THIRD STREET
SAN BERNARDINO, CALIFORNIA
 J. MOAKEY CITY ENG. OCTOBER, 1915



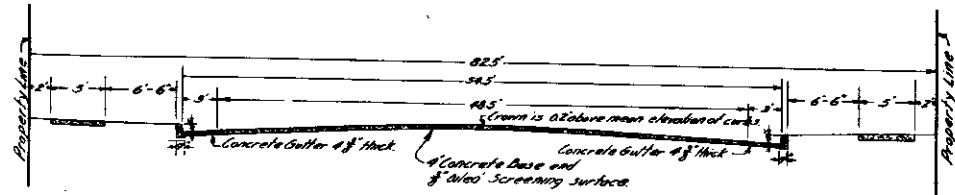
PLAN
Scale 1"=50'



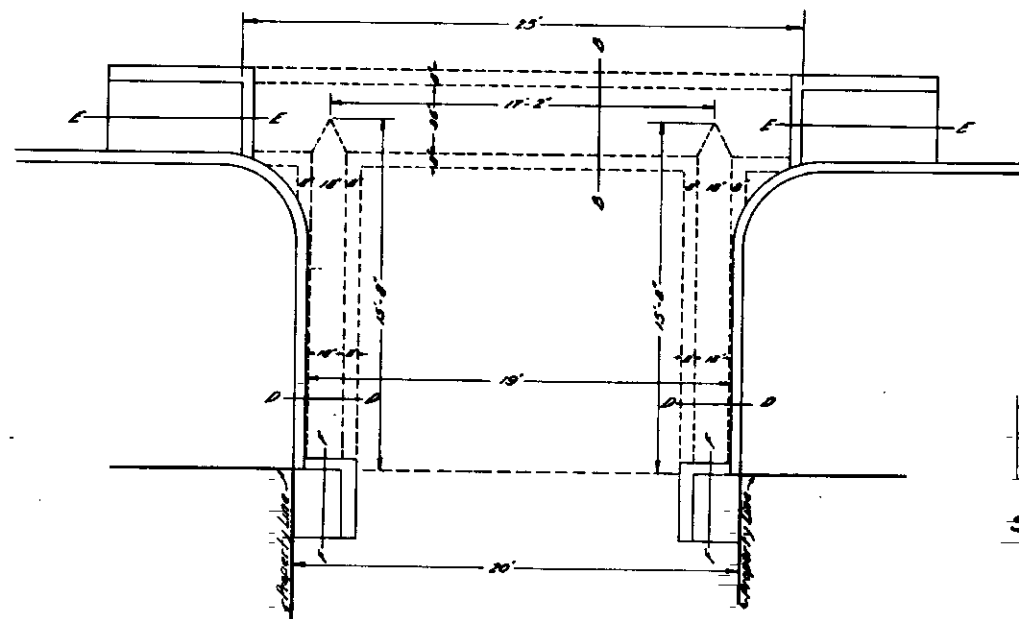
PLAN OF CULVERT NO. 4
Scale 1"=1'



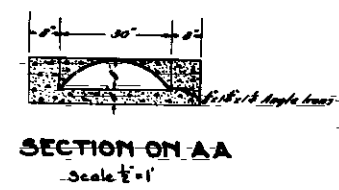
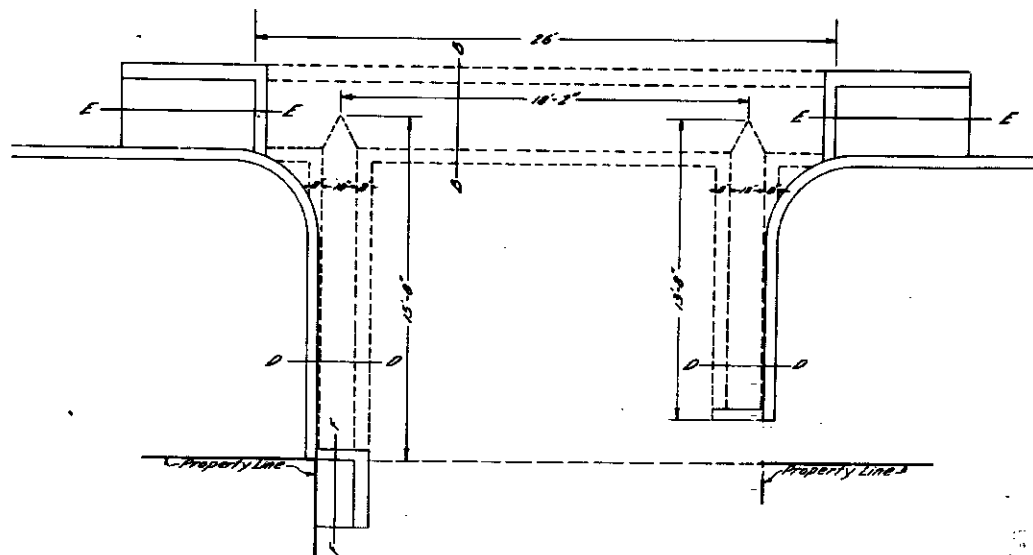
PLAN OF CULVERT NO. 3
WITH STUB CULVERTS
Scale 1"=1'



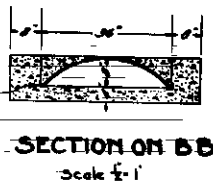
TYPICAL CROSS SECTION OF SIDEWALK



PLAN OF CULVERT NO. 1
WITH STUB CULVERTS
Scale 1"=1'



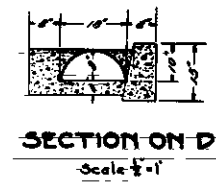
SECTION ON AA
Scale 1"=1'



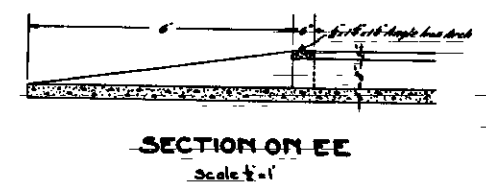
SECTION ON BB
Scale 1"=1'



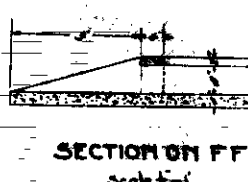
SECTION ON CC
Scale 1"=1'



SECTION ON DD
Scale 1"=1'



SECTION ON EE
Scale 1"=1'



SECTION ON FF
Scale 1"=1'

1" means foot or feet
1/2" means inch or inches
3/4" means 3/4 inch
1/4" means 1/4 inch
All culverts to be number 10 gauge iron
United States standard
All ends of culverts to be protected
by 1/2" x 1/2" x 8" angle iron brutes.

Concrete in section shown thus
Pavement to be constructed shown thus
Gutter to be constructed shown thus
Culverts to be constructed shown thus

18249
PLANS
FOR THE
IMPROVEMENT
OF
CARTER AVENUE
FROM
RIALTO AVENUE TO THIRD STREET
SAN BERNARDINO, CALIFORNIA
J. MOAKEY CITY ENG. OCTOBER, 1915